

# Rotary Solenoid

## --WCGF50-20



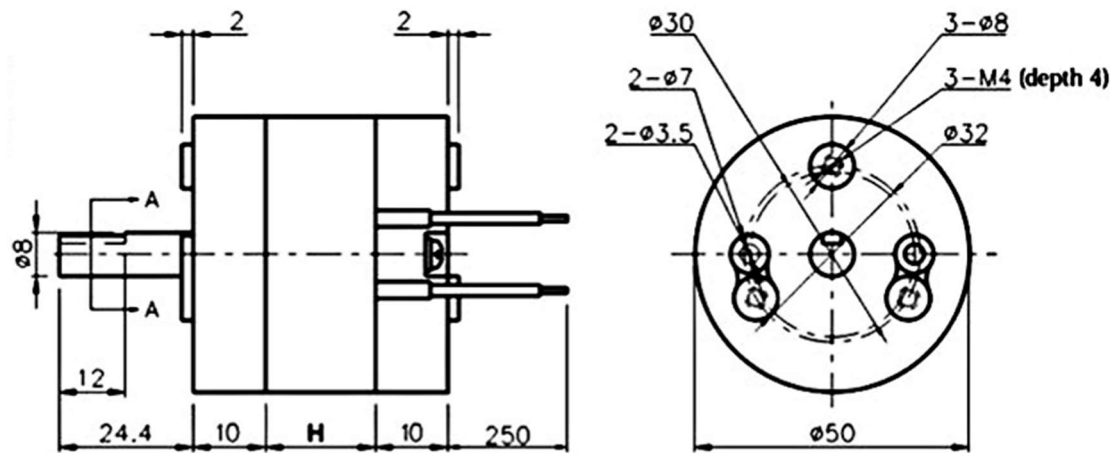
## Description

The WCGF50-20 Rotary Solenoid from Shanglinmotor offers high torque and rapid response, making it the perfect choice for your demanding applications. With an optional rotation angle of 30-100°, it provides flexibility to suit your specific needs. Equipped with high-performance ball bearings, it ensures smooth operation and minimal energy consumption. With a remarkable service life of up to 10 million cycles, you can rely on its durability and longevity. The WCGF50-20 Rotary Solenoid operates effortlessly, driven by magnetic force without any directional constraints or mechanical friction, resulting in low noise and high-speed response. It features user-selectable left and right rotation, self-reset and self-holding capabilities, and built-in and external limits for added convenience.

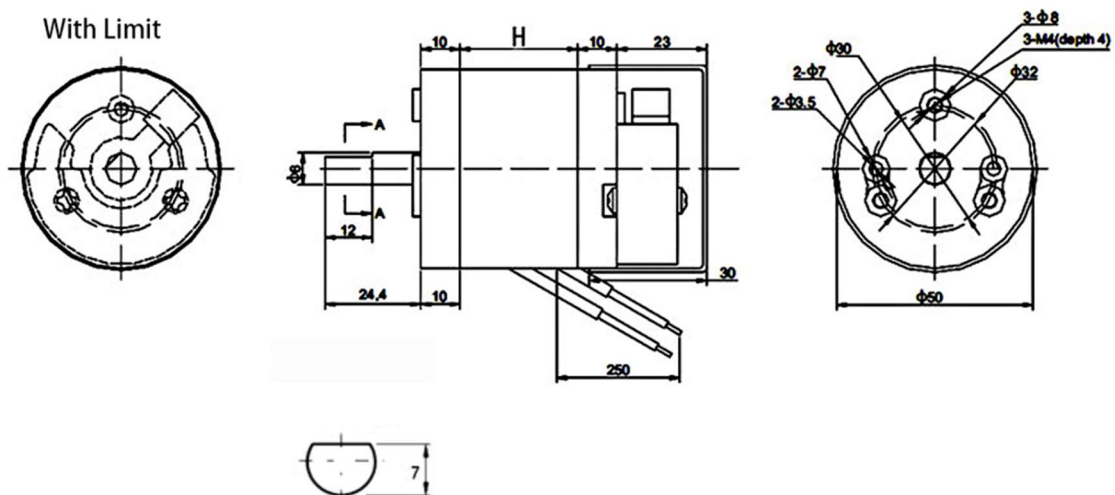
## Specifications

Model	WCG50-20/20-R14	WCG50-20/20-R20	WCG50-20/20-R28
Voltage	DC12-24V	DC12-24V	DC12-24V
Current	1.7A	1.2A	0.9A
Power	41W	29W	21W
Size	Φ50*40, shaft Φ8mm		
Torque	0.24N.m	0.22N.m	0.2N.m
Life Span	> 10 million times	> 10 million times	> 10 million times
Working Frequency	50 times/s	50 times/s	50 times/s
Rotary Angle	0-100° option	0-100° option	0-100° option
Angle Limit	With/Without	With/Without	With/Without
Working Temperature	-20°C~80°C	-20°C~80°C	-20°C~80°C
Max Time	<1s	<180s	Continues
Duty Circle	10%	50%	100%

## Dimension



Rotary Solenoid Without Limit



Rotary Solenoid With Limit

Unit: mm

Height options:

WCGF50-20/20, H=20

WCGF50-20/15, H=15

WCGF50-20/10, H=10

## Limit Options

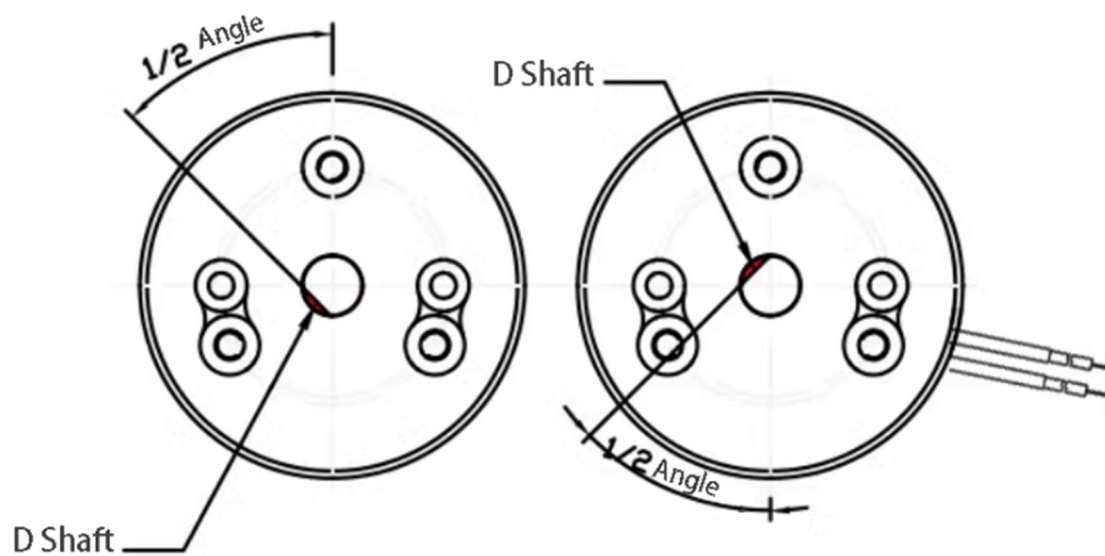


Right rotation

Left rotation

## Self-holding

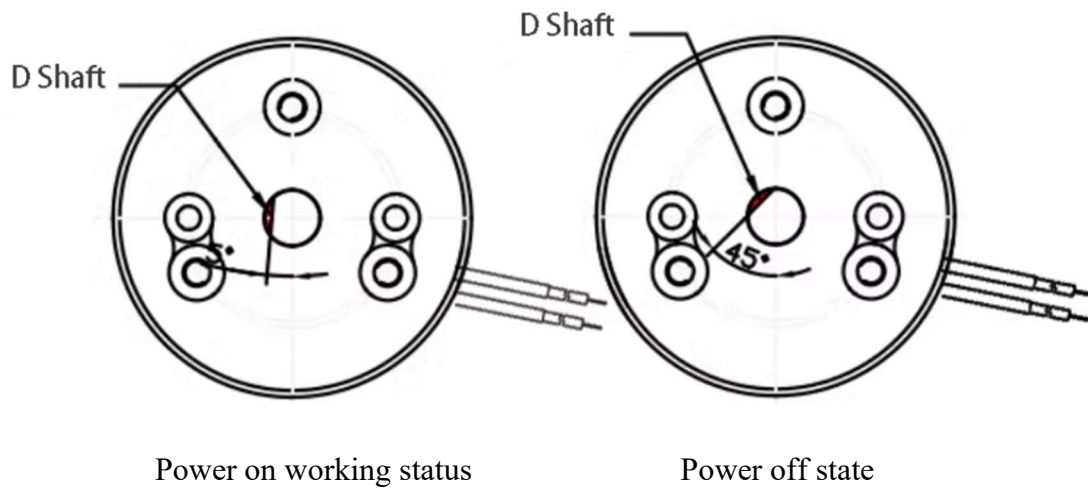
Angle option: 30°, 60°, 90°



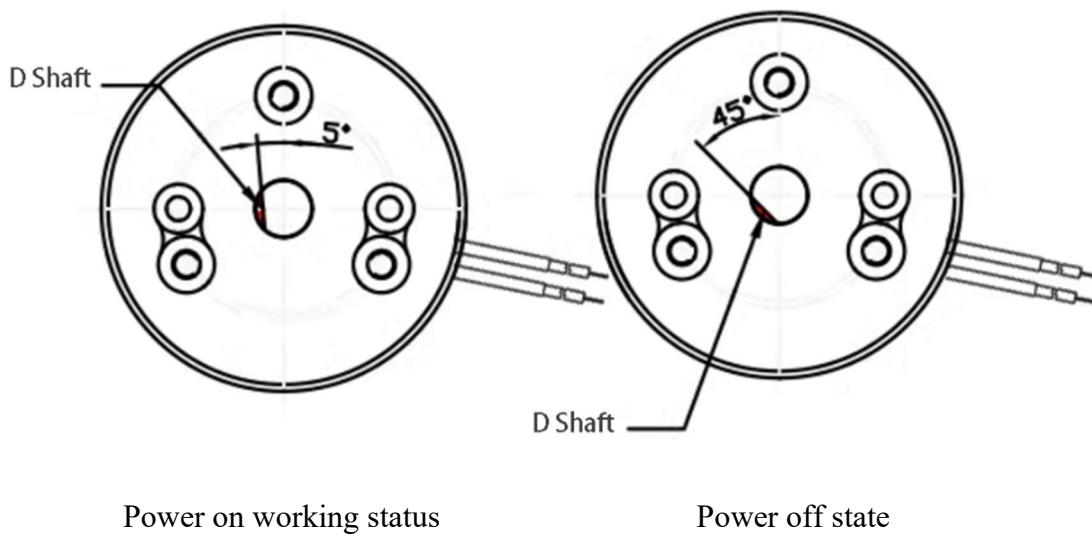
Forward power on status

Reverse power on status

### Self-return 40° Left Rotation



### Self-return 40° Right Rotation



## Support

Email: [sales@fandei.com](mailto:sales@fandei.com)

T/WhatsApp: +8615902990387