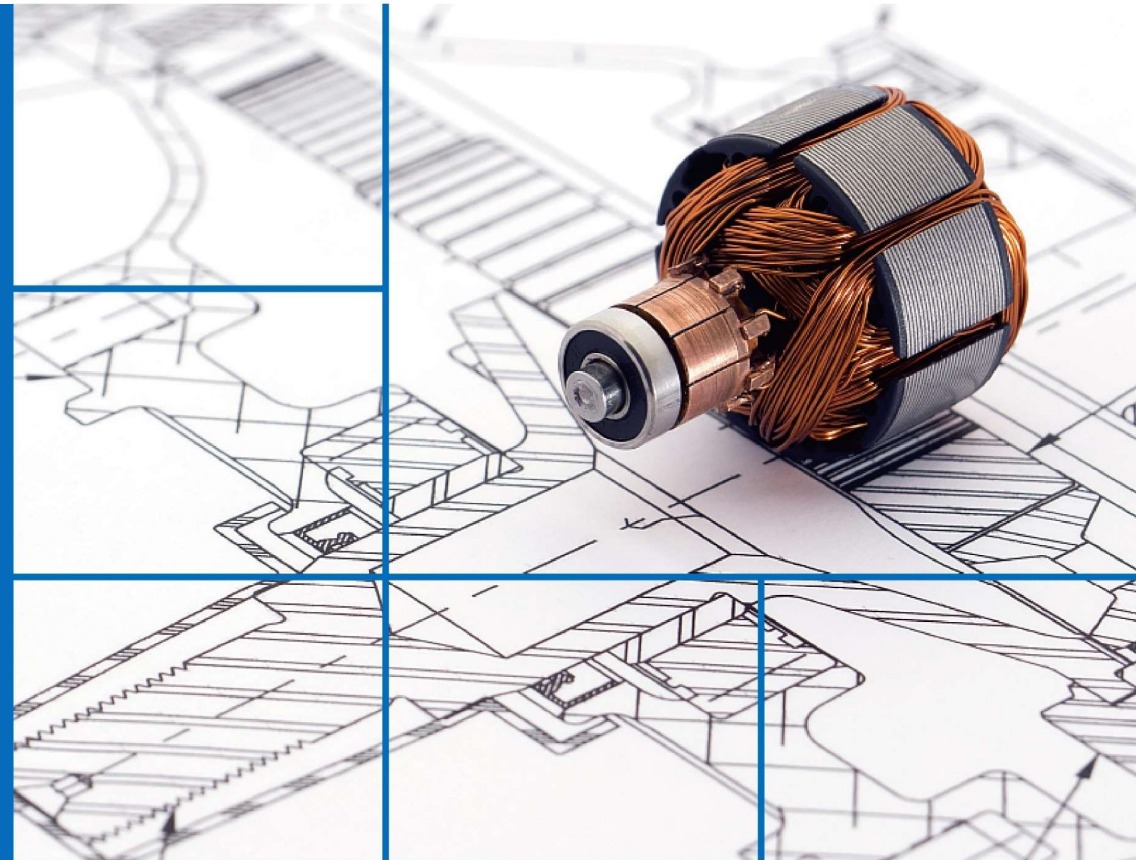


**SHANGLINMOTOR<sup>®</sup>**  
**IDEAS IN AUTOMATIONS**

西安凡得创智电子有限公司  
Fandei Electronics Co., Ltd.

No.78 Keji 2 Road, High-Tech Development Zone, Xi'an,  
Shaanxi, China

Email: [liujiang@fandei.com](mailto:liujiang@fandei.com)  
TEL/WhatsApp: +86 15902990387  
Web: [www.shanglinmotor.com](http://www.shanglinmotor.com)





## DC Worm Gear Motor

D59R/L

### Picture



D59L-2450-25

D59R-2450-25

D59R-2450-25-H12



S1

S2

S3

S4

S5

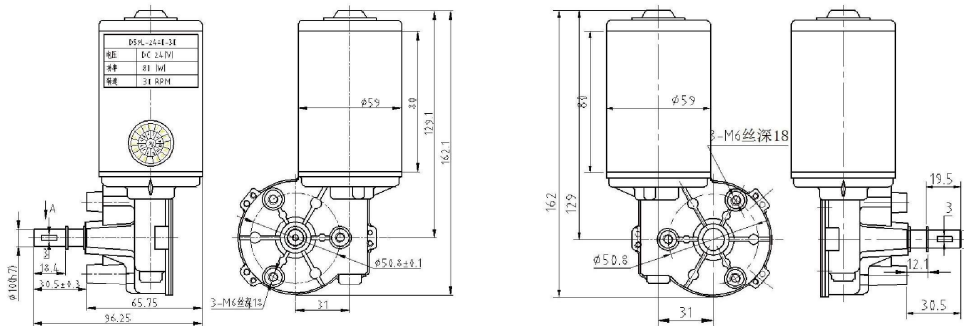
S6

S7

S8

S1: Half round key; S2: D type; S3: Hexagonal; S4: K-direction spline and threaded;  
S5: Double flat threaded; S6: Double output; S7: Extension;

### Dimension



## DC Worm Gear Motor

D59R/L

Reduction ratio

56:1, 56:2, 70:1

Gear modulus

70:1 M=0.8

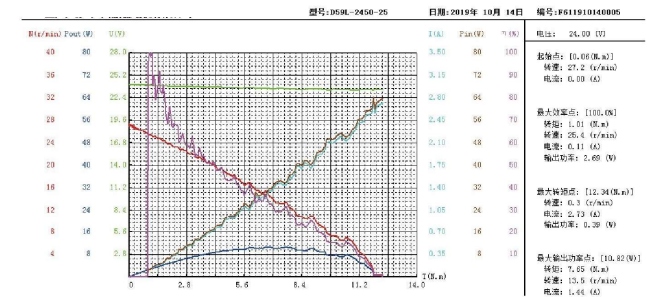
56:1, 56:2 M=1



Plastic Gear

Copper Gear

电机特性曲线图



### Specifications

Model	额定电压 (V)	额定功率 (W)	No-load		Load				Ratio
			转速 (RPM)	电流 (A)	转速 (RPM)	电流 (A)	力矩 (N.M)	最大力矩 (N.M)	
D59L/R-2460-20	24	60	20±2	≤0.5	15±2	≤4.0	≥6.0	≥10.0	1:70
D59L/R-2480-27	24	80	27±2	≤0.5	19±2	≤5.0	≥8.0	≥14.0	1:70
D59L/R-11080-60	110	80	60±3	≤0.5	50±3	≤3.5	≥12	≥19.0	1:56
D59L/R-4830-65	48	30	65±3	≤1.0	60±3	≤5.5	≥12	≥19.0	1:56
D59L/R-2480-120	24	80	120±5	≤0.8	90±5	≤6.5	≥7.0	≥13.0	1:28
D59L/R-2430-180	24	30	180±5	≤1.2	150±5	≤13.0	≥10.0	≥15.0	1:28
D59L/R-2450-260	24	50	260±5	≤1.5	230±5	≤15.0	≥9.5	≥14.0	1:28

Note

- The motor models can be customized based on customer requirements such as voltage, power, speed, torque, motor installation size, and shaft size.
- The motor selection range includes voltage (12-110VDC), power (30-80W), and speed (15-260rpm).
- Optional speed sensors like Hall sensor, photoelectric encoder, and photoelectric switch are available.
- This versatile motor finds applications in welding equipment, intelligent door control, home appliance Automation devices, gemstone machinery, office intelligent equipment, and hotel leisure. It offers various reduction ratios to meet different industry needs for motor torque and output speed.



## DC Worm Gear Motor

D63R/L

### Picture



D63L-2480-55

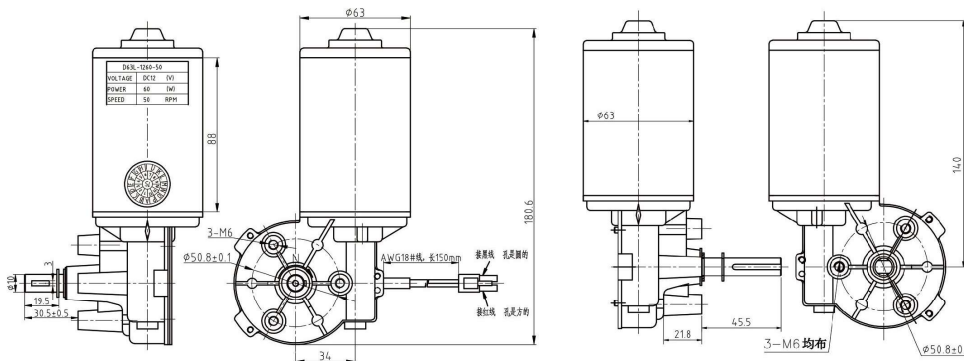
D63R-2480-55

D63L-2480-55-Brake



S1: Half round key; S2: D type; S3: Hexagonal; S4: K-direction spline and threaded;  
S5: Double flat threaded; S6: Double output; S7: Extension;

### Dimension



## DC Worm Gear Motor

D63R/L

### Reduction ratio

75:1, 60:1, 60:3, 60:4

### Gear modulus

75:1 M=0.8

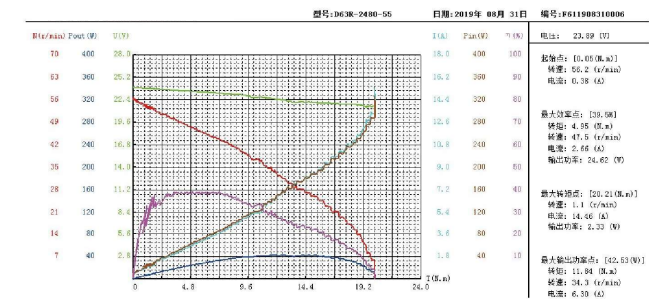
60:1, 60:3, 60:4 M=1 Plastic Gear



Plastic Gear

Copper Gear

### 电机特性曲线图



### Specifications

Model	额定电压 (V)	额定功率 (W)	No-load		Load				Ratio
			转速 (RPM)	电流 (A)	转速 (RPM)	电流 (A)	力矩 (N.M)	最大力矩 (N.M)	
D63L/R-4860-300	48	60	300±5	≤1.0	270±5	≤9.0	≥7.5	≥11.5	1:20
D63L/R-36100-200	36	100	200±5	≤1.0	160±5	≤8.5	≥7.5	≥12.0	1:20
D63L/R-2480-200	24	80	200±5	≤1.0	160±5	≤12.5	≥10.0	≥14.0	1:20
D63L/R-2480-150	24	80	150±5	≤1.0	130±5	≤9.5	≥10.0	≥15.0	1:20
D63L/R-12100-100	12	100	100±5	≤2.0	70±5	≤12.0	≥12.0	≥19.0	1:20
D63L/R-2480-100	24	80	100±5	≤0.8	70±5	≤6.0	≥7.0	≥13.0	1:20
D63L/R-2480-65	24	80	65±3	≤0.8	60±3	≤11.0	≥17.5	≥25.0	1:60
D63L/R-1280-30	12	80	30±3	≤1.0	20±3	≤6.5	≥8.0	≥14.0	1:60
D63L/R-1240-30	12	40	40±3	≤1.0	30±3	≤6.0	≥8.0	≥14.0	1:60
D63L/R-2450-45	24	50	45±3	≤1.0	40±3	≤6.0	≥10.5	≥18.5	1:75
D63L/R-2480-15	24	80	15±3	≤1.0	10±3	≤3.0	≥6.5	≥10.5	1:75

### Note

- The motor models can be customized based on customer requirements such as voltage, power, speed, torque, motor installation size, and shaft size.
- The motor selection range includes voltage (12-110VDC), power (50-100W), and speed (20-300rpm).
- Optional speed sensors like Hall sensor, photoelectric encoder, and photoelectric switch are available.
- This versatile motor finds applications in welding equipment, intelligent door control, home appliance Automation devices, gemstone machinery, office intelligent equipment, and hotel leisure. It offers various reduction ratios to meet different industry needs for motor torque and output speed.



## DC Worm Gear Motor

D76R/L

### Picture



D76L-2465-200

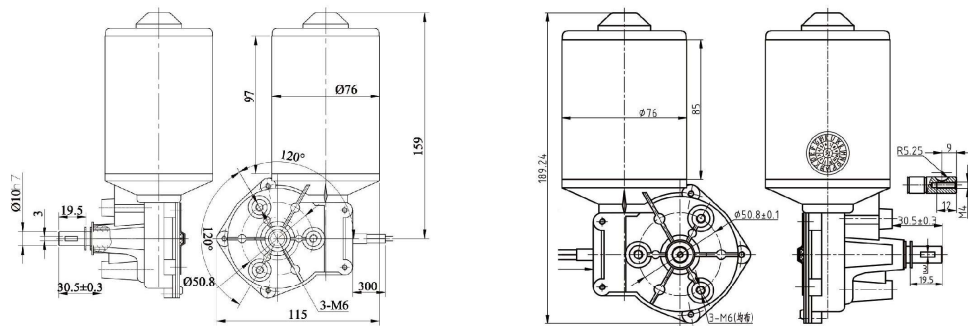
D76R-2465-200

D76L-2465-200



S1: Half round key; S2: D type; S3: Hexagonal; S4: K-direction spline and threaded;  
S5: Double flat threaded; S6: Double output; S7: Extension;

### Dimension



## DC Worm Gear Motor

D76R/L

### Reduction ratio

75:1, 65:1, 60:1, 60:3

### Gear modulus

75:1 M=0.8

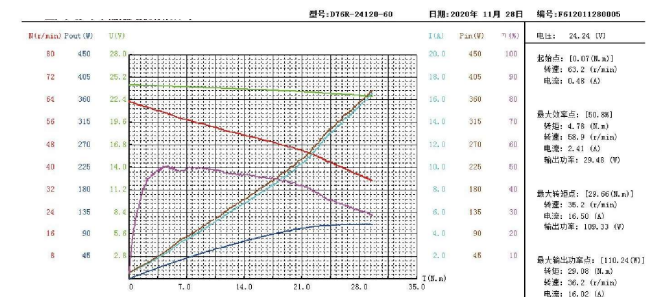
65:1, 60:1, 60:3 M=1



Plastic Gear

Copper Gear

### 电机特性曲线图



### Specifications

Model	额定电压 (V)	额定功率 (W)	No-load		Load				Ratio
			转速 (RPM)	电流 (A)	转速 (RPM)	电流 (A)	力矩 (N.M)	最大力矩 (N.M)	
D76L/R-2460-30	24	60	30±3	≤1.0	26±3	≤4.5	≥15	≥25	1:75
D76L/R-48200-40	48	200	40±3	≤1.0	30±3	≤5.0	≥30	≥60	1:75
D76L/R-24120-60	24	120	60±3	≤1.0	50±3	≤3.5	≥20	≥30	1:60
D76L/R-29120-70	29	120	70±3	≤1.2	60±3	≤12	≥29	≥60	1:60
D76L/R-12200-50	12	200	50±3	≤3.0	42±3	≤30	≥26	≥40	1:60
D76L/R-24150-150	24	150	150±5	≤1.0	130±5	≤15	≥15	≥26	1:20
D76L/R-12200-250	12	200	250±5	≤1.5	230±5	≤20	≥7.5	≥15	1:20
D76L/R-2495-180	24	95	180±5	≤1.2	150±5	≤4.5	≥8.0	≥18	1:20
D76L/R-12200-220	12	200	220±5	≤3.0	180±5	≤15	≥9.0	≥18	1:20
D76L/R-72300-400	72	300	400±5	≤1.5	380±5	≤12	≥60	≥100	1:15

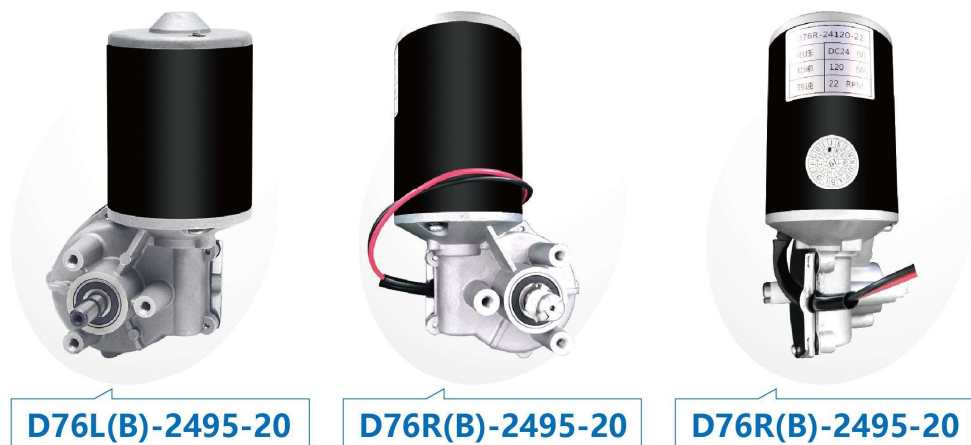
### Note

- The motor models can be customized based on customer requirements such as voltage, power, speed, torque, motor installation size, and shaft size.
- The motor selection range includes voltage < 110VDC, power < 200W, and speed (15-300rpm).
- Optional speed sensors like Hall sensor, photoelectric encoder, and photoelectric switch are available.
- This versatile motor finds applications in welding equipment, intelligent door control, home appliance Automation devices, gemstone machinery, office intelligent equipment, and hotel leisure. It offers various reduction ratios to meet different industry needs for motor torque and output speed.

## DC Worm Gear Motor

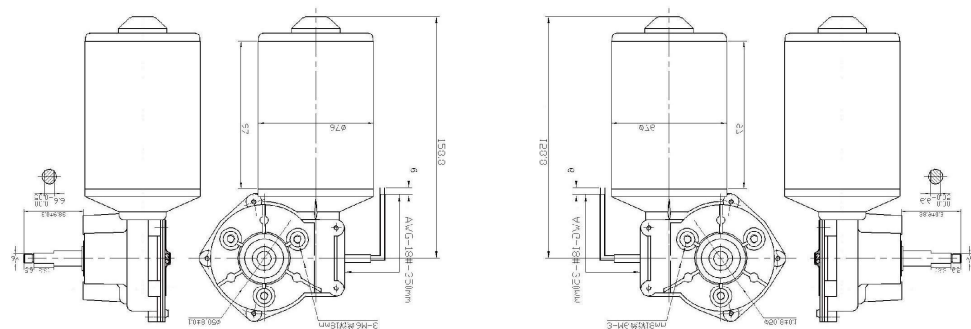
**D76R/L(B)**

## Picture



S1: Half round key; S2: D type; S3: Hexagonal; S4: K-direction spline and threaded;  
S5: Double flat threaded; S6: Double output; S7: Extension;

## Dimension



## DC Worm Gear Motor

**D76R/L(B)**

## Reduction ratio

75:1, 65:1, 60:1, 60:3

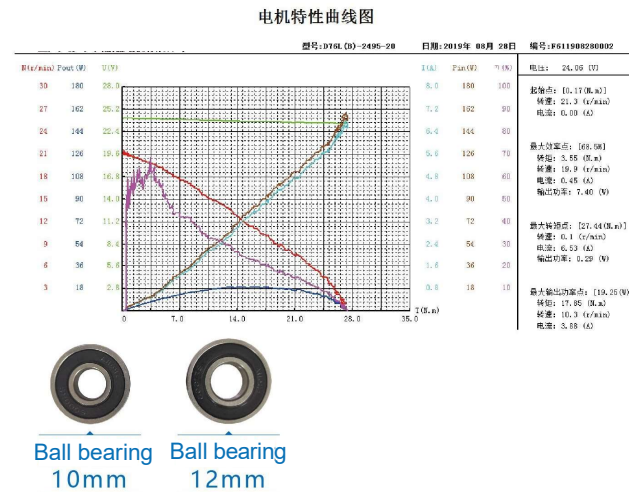
### Gear modulus

75:1 M=0.8

65:1, 60:1, 60:3 M=1



## Specifications



Model	额定电压 (V)	额定功率 (W)	No-load		Load				Ratio
			转速 (RPM)	电流 (A)	转速 (RPM)	电流 (A)	力矩 (N.M)	最大力矩 (N.M)	
D76L/R(B)-2460-30	24	60	30±3	≤1.0	26±3	≤4.5	≥15	≥25	1:75
D76L/R(B)-48200-40	48	200	40±3	≤1.0	30±3	≤5.0	≥30	≥60	1:75
D76L/R(B)-24120-60	24	120	60±3	≤1.0	50±3	≤3.5	≥20	≥30	1:60
D76L/R(B)-29120-70	29	120	70±3	≤1.2	60±3	≤12	≥29	≥60	1:60
D76L/R(B)-12200-50	12	200	50±3	≤3.0	42±3	≤30	≥26	≥40	1:60
D76L/R(B)-24150-150	24	150	150±5	≤1.0	130±5	≤15	≥15	≥26	1:20
D76L/R(B)-12200-250	12	200	250±5	≤1.5	230±5	≤20	≥7.5	≥15	1:20
D76L/R(B)-2495-180	24	95	180±5	≤1.2	150±5	≤4.5	≥8.0	≥18	1:20
D76L/R(B)-12200-220	12	200	220±5	≤3.0	180±5	≤15	≥9.0	≥18	1:20
D76L/R(B)-72300-400	72	300	400±5	≤1.5	380±5	≤12	≥60	≥100	1:15

### Note

- The motor models can be customized based on customer requirements such as voltage, power, speed, torque, motor installation size, and shaft size.
- The motor selection range includes voltage < 110VDC, power < 200W, and speed (15-300rpm).
- Optional speed sensors like Hall sensor, photoelectric encoder, and photoelectric switch are available.
- This versatile motor finds applications in welding equipment, intelligent door control, home appliance Automation devices, gemstone machinery, office intelligent equipment, and hotel leisure. It offers various reduction ratios to meet different industry needs for motor torque and output speed.

## DC Worm Gear Motor

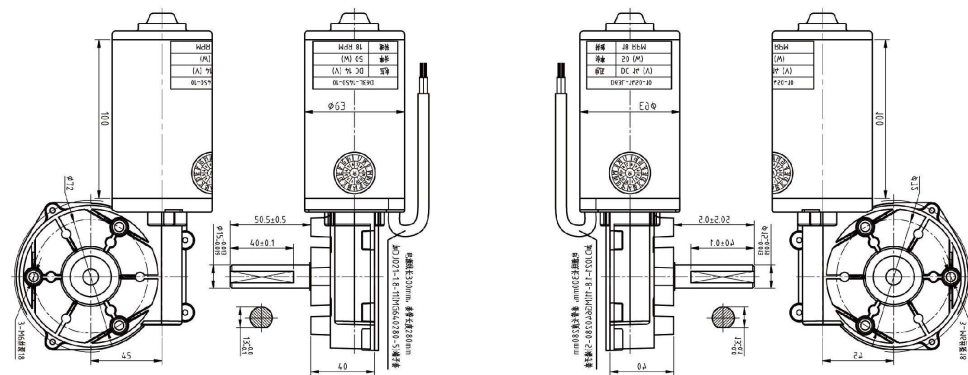
D63L(72)

### Picture



S1: Half round key; S2: D type; S3: Hexagonal; S4: K-direction spline and threaded;  
S5: Double flat threaded; S6: Double output; S7: Extension;

### Dimension



## DC Worm Gear Motor

D63L(72)

### Reduction ratio

53:1, 64:1, 82:1, 82:2

### Gear modulus

53:1 M=1.5 Plastic Gear

64:1 M=1.25 Copper Gear

82:1 M=1 Plastic Gear, Copper Gear

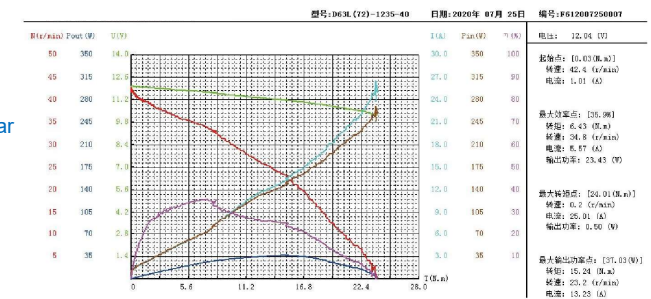
82:2 M=1 Copper Gear



Plastic Gear

Copper Gear

### 电机特性曲线图



### Specifications

Model	额定电压 (V)	额定功率 (W)	No-load		Load				Ratio
			转速 (RPM)	电流 (A)	转速 (RPM)	电流 (A)	力矩 (N.M)	最大力矩 (N.M)	
D63L(72)-4860-300	48	60	300±5	≤1.0	270±5	≤9.0	≥7.5	≥11.5	1:20
D63L(72)-36100-200	36	100	200±5	≤1.0	160±5	≤8.5	≥7.5	≥12.0	1:20
D63L(72)-2480-200	24	80	200±5	≤1.0	160±5	≤12.5	≥10.0	≥14.0	1:20
D63L(72)-2480-150	24	80	150±5	≤1.0	130±5	≤9.5	≥10.0	≥15.0	1:20
D63L(72)-12100-100	12	100	100±5	≤2.0	70±5	≤12.0	≥12.0	≥19.0	1:20
D63L(72)-2480-100	24	80	100±5	≤0.8	70±5	≤6.0	≥7.0	≥13.0	1:20
D63L(72)-2480-65	24	80	65±3	≤0.8	60±3	≤11.0	≥17.5	≥25.0	1:60
D63L(72)-1280-30	12	80	30±3	≤1.0	20±3	≤6.5	≥8.0	≥14.0	1:60
D63L(72)-1240-30	12	40	40±3	≤1.0	30±3	≤6.0	≥8.0	≥14.0	1:60
D63L(72)-2450-45	24	50	45±3	≤1.0	40±3	≤6.0	≥10.5	≥18.5	1:75
D63L(72)-2480-15	24	80	15±3	≤1.0	10±3	≤3.0	≥6.5	≥10.5	1:75

### Note

- The motor models can be customized based on customer requirements such as voltage, power, speed, torque, motor installation size, and shaft size.
- The motor selection range includes voltage (12-110VDC), power (50-100W), and speed (20-300rpm).
- Optional speed sensors like Hall sensor, photoelectric encoder, and photoelectric switch are available.
- This versatile motor finds applications in welding equipment, intelligent door control, home appliance Automation devices, gemstone machinery, office intelligent equipment, and hotel leisure. It offers various reduction ratios to meet different industry needs for motor torque and output speed.



## DC Worm Gear Motor

D76R(72)

### Picture

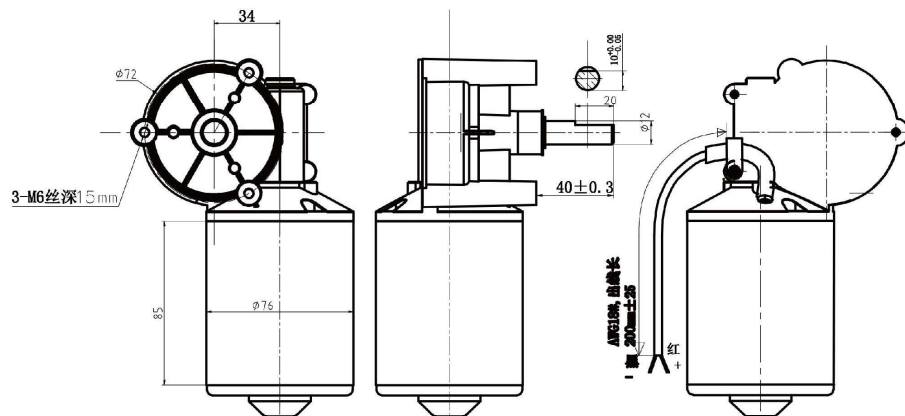


D76R(72)-24120-75



S1: Half round key; S2: D type; S3: Hexagonal; S4: K-direction spline and threaded;  
S5: Double flat threaded; S6: Double output; S7: Extension;

### Dimension



## DC Worm Gear Motor

D76R(72)

### Reduction ratio

60:1, 60:3, 75:1

### Gear modulus

60:1, 60:3 M=1

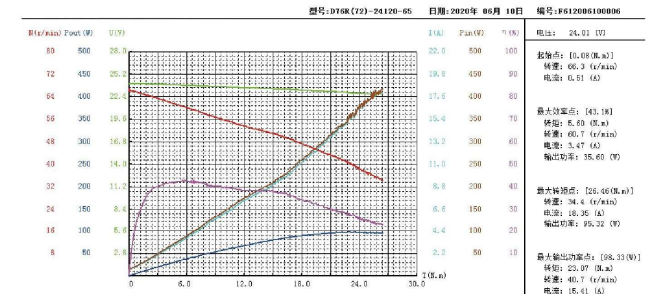
75:1 M=0.8 塑胶齿轮, 铜齿轮



Plastic Gear

Copper Gear

### 电机特性曲线图



### Specifications

Model	额定电压 (V)	额定功率 (W)	No-load		Load				Ratio
			转速 (RPM)	电流 (A)	转速 (RPM)	电流 (A)	力矩 (N.M)	最大力矩 (N.M)	
D76R(72)-2460-30	24	60	30±3	≤1.0	26±3	≤4.5	≥15	≥25	1:75
D76R(72)-48200-40	48	200	40±3	≤1.0	30±3	≤5.0	≥30	≥60	1:75
D76R(72)-24120-60	24	120	60±3	≤1.0	50±3	≤3.5	≥20	≥30	1:60
D76R(72)-29120-70	29	120	70±3	≤1.2	60±3	≤12	≥29	≥60	1:60
D76R(72)-12200-50	12	200	50±3	≤3.0	42±3	≤30	≥26	≥40	1:60
D76R(72)-24150-150	24	150	150±5	≤1.0	130±5	≤15	≥15	≥26	1:20
D76R(72)-12200-250	12	200	250±5	≤1.5	230±5	≤20	≥7.5	≥15	1:20
D76R(72)-2495-180	24	95	180±5	≤1.2	150±5	≤4.5	≥8.0	≥18	1:20
D76R(72)-12200-220	12	200	220±5	≤3.0	180±5	≤15	≥9.0	≥18	1:20
D76R(72)-72300-400	72	300	400±5	≤1.5	380±5	≤12	≥60	≥100	1:15

### Note

- The motor models can be customized based on customer requirements such as voltage, power, speed, torque, motor installation size, and shaft size.
- The motor selection range includes voltage < 110VDC, power < 200W, and speed (15-300rpm).
- Optional speed sensors like Hall sensor, photoelectric encoder, and photoelectric switch are available.
- This versatile motor finds applications in welding equipment, intelligent door control, home appliance Automation devices, gemstone machinery, office intelligent equipment, and hotel leisure. It offers various reduction ratios to meet different industry needs for motor torque and output speed.

## DC Worm Gear Motor

D88R(72)

### Picture



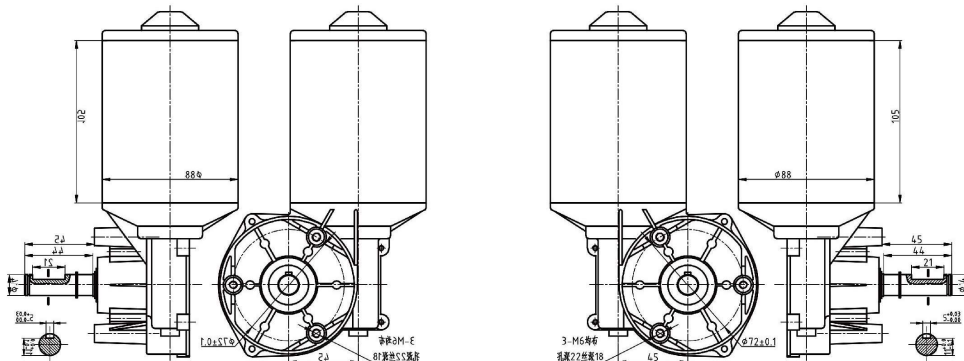
D88L(72)-24200-170

D88R(72)-24200-170



S1: Half round key; S2: D type; S3: Hexagonal; S4: K-direction spline and threaded;  
S5: Double flat threaded; S6: Double output; S7: Extension;

### Dimension



## DC Worm Gear Motor

D88R(72)

### Reduction ratio

53:1, 64:1, 82:1, 82:2

### Gear modulus

53:1 M=1.5 Plastic Gear

64:1 M=1.25 Copper Gear

82:1 M=1 Plastic Gear, Copper Gear

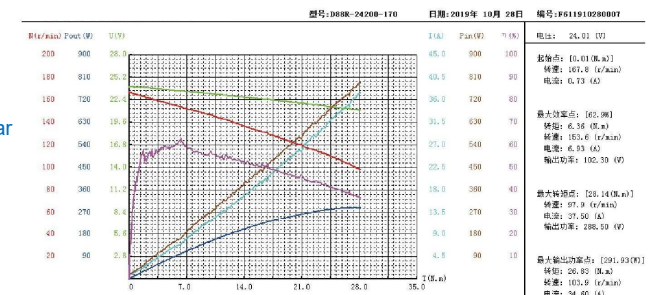
82:2 M=1 Copper Gear



Plastic Gear

Copper Gear

### 电机特性曲线图



### Specifications

Model	额定电压 (V)	额定功率 (W)	No-load		Load				Ratio
			转速 (RPM)	电流 (A)	转速 (RPM)	电流 (A)	力矩 (N.M)	最大力矩 (N.M)	
D88R(72)-24600-60	24	600	60±3	≤2.5	50±30	≤11	≥27	≥50	1:82
D88R(72)-24200-100	24	200	100±5	≤2.0	85±5	≤20	≥28	≥60	1:34
D88R(72)-48350-170	48	350	170±5	≤3.0	150±5	≤20	≥30	≥60	1:34
D88R(72)-12500-85	12	500	85±5	≤12	70±5	≤30	≥15	≥25	1:34

### Note

- The motor models can be customized based on customer requirements such as voltage, power, speed, torque, motor installation size, and shaft size.
- The motor selection range includes voltage: 110VDC, power (120W-1000W), and speed (15-300rpm).
- Optional speed sensors like Hall sensor, photoelectric encoder, and photoelectric switch are available.
- This versatile motor finds applications in welding equipment, intelligent door control, home appliance Automation devices, gemstone machinery, office intelligent equipment, and hotel leisure. It offers various reduction ratios to meet different industry needs for motor torque and output speed.